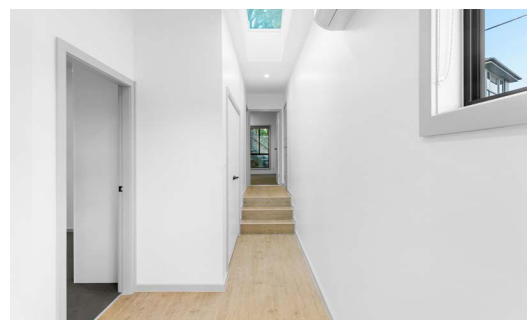
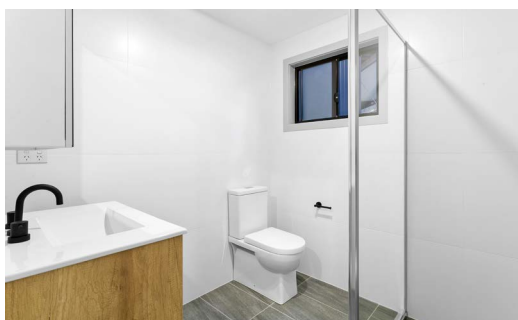
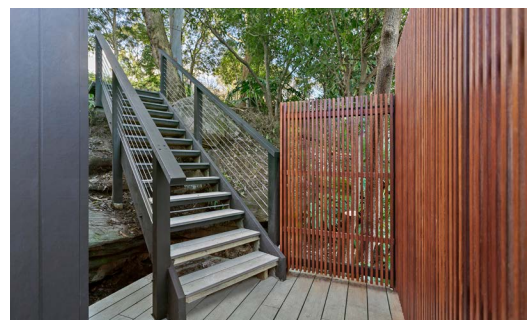


# WEST PYMBLE - H5

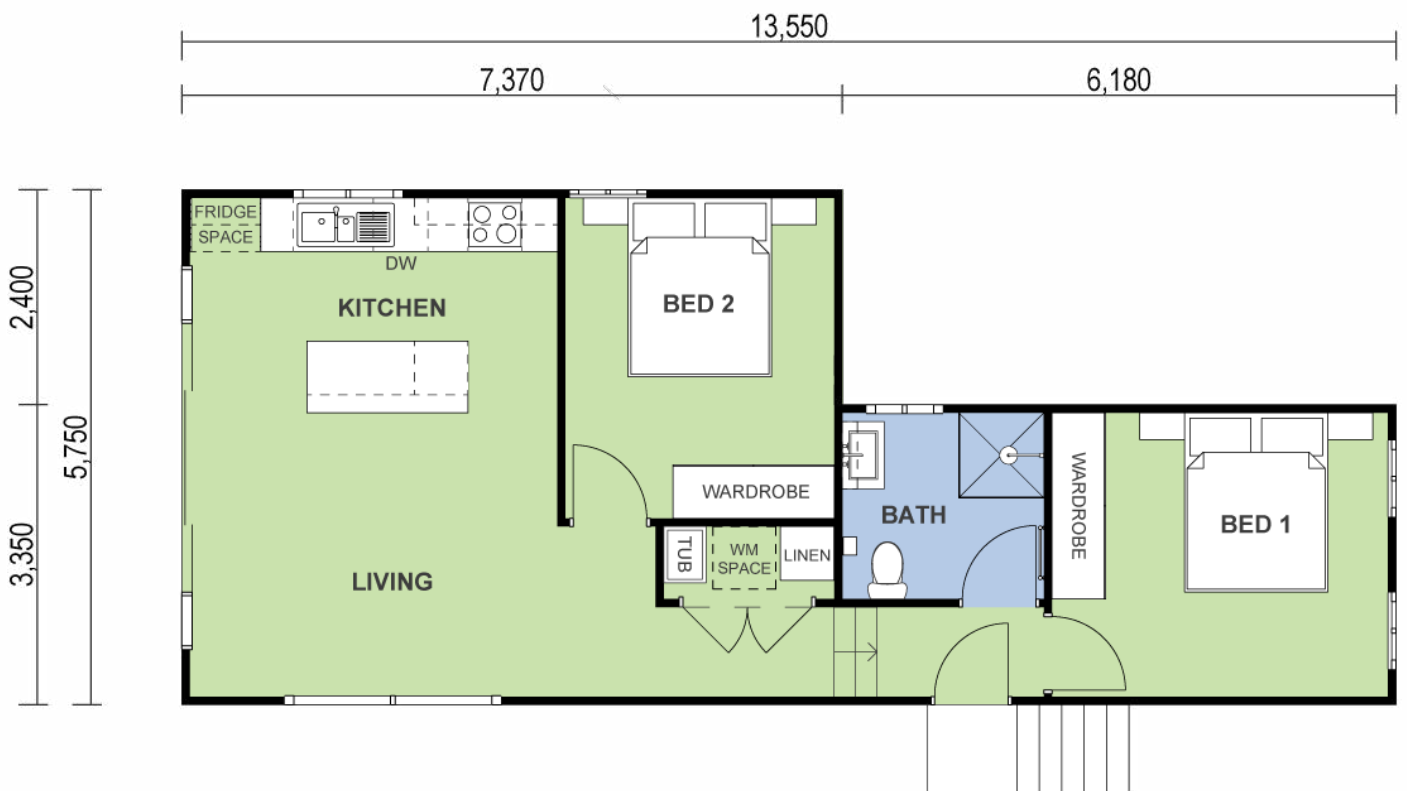
2 BED, 1 BATH



- 60m<sup>2</sup> custom designed Granny Flat
- Fibre cement render facade
- 2000L rainwater tank
- Natural timber front landing, balustrade, steps
- 20mm stone kitchen benchtop
- Skylight
- Ceramic splashback
- Chrome duck sink mixer
- 600mm Westinghouse appliances
- Semi framed shower screen
- Natural oak vanity
- Shaving cabinet
- Porcelain bathroom floor tiles
- Full height ceramic bathroom tiles
- Mirrored bedroom wardrobes
- Roller blinds
- Digital TV antenna
- Fold down clothesline

# WEST PYMBLE - H5

2 BED, 1 BATH



See more of this project and others on our website!



The Only Multi-Award Winning Builders— Build with the Best

(02) 9481 7443  
@ info@GrannyFlatSolutions.com.au  
www.GrannyFlatSolutions.com.au