

FRENCHS FOREST - R36

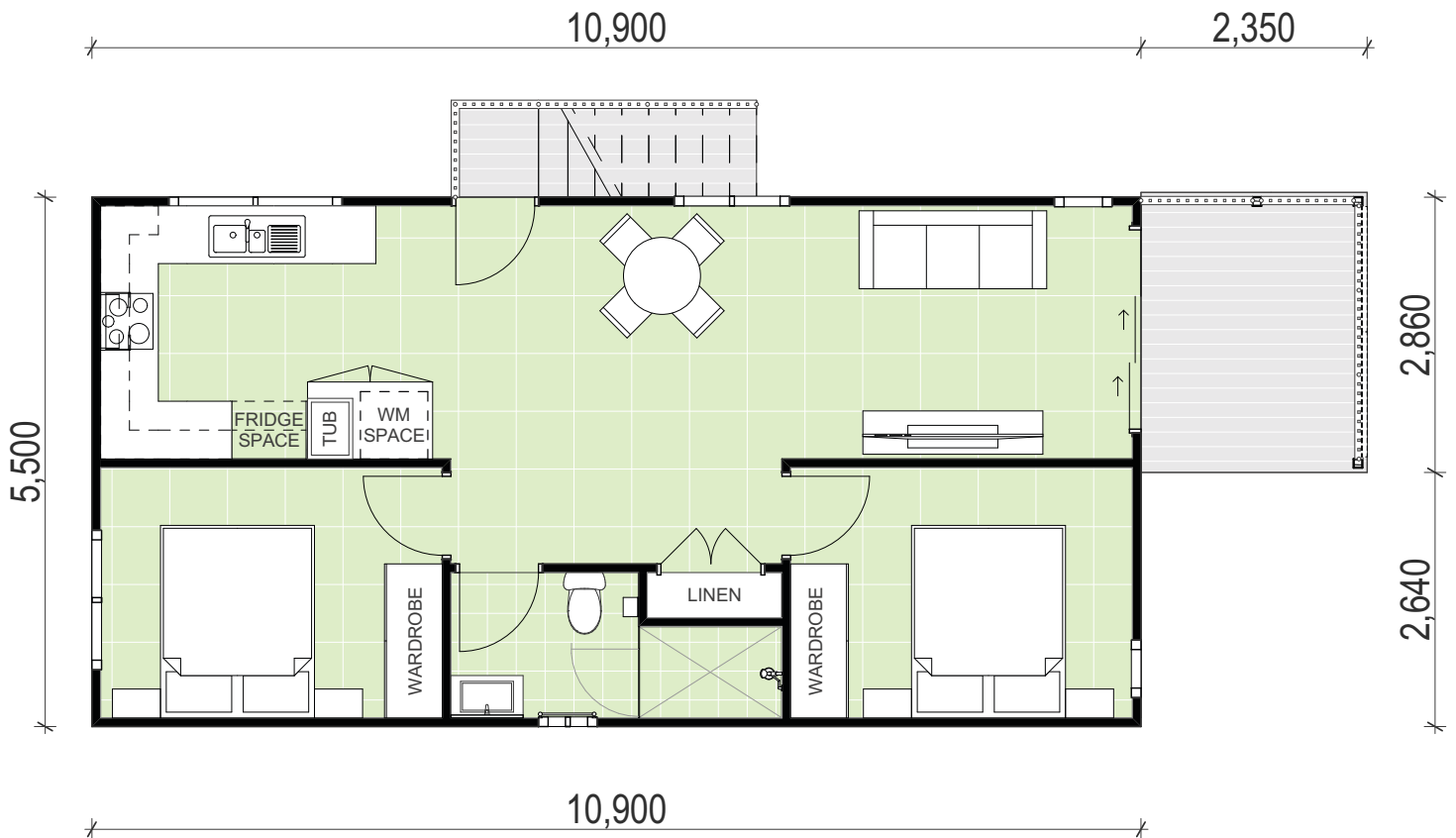
2 BED, 1 BATH



- **60m² Passive Granny Flat**
- 2 bedrooms with wardrobes
- 1 bathroom with fitouts
- Separate laundry in kitchen cupboards
- 7m² treated pine deck with timber stairs & balustrade
- Bamboo privacy screen
- Vinyl cladding facade
- Colorbond, skillion roof
- Vinyl flooring throughout
- 20mm stone benchtop
- Polytec melamine cupboards
- Westinghouse appliances, dishwasher & ceramic cooktop
- Externally ducted rangehood
- Linen cupboard
- Semi-framed shower screens
- LED downlights throughout
- Tilt & turn windows with honeycomb blinds
- 3000L Slimline rainwater tank

FRENCHS FOREST - R36

2 BED, 1 BATH



See more of this project and others on our website!



The Only Multi-Award Winning Builders— Build with the Best

(02) 9481 7443
@ info@GrannyFlatSolutions.com.au
www.GrannyFlatSolutions.com.au